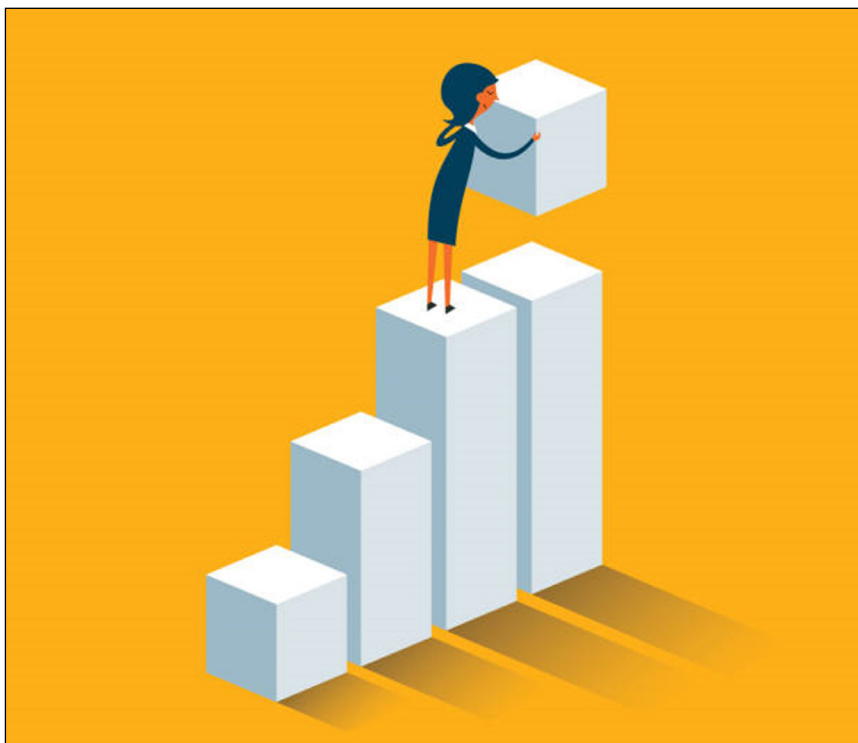


# Recipients named for second round of Moving Forward in Mission grants

By LISA KERN

Twenty-two ATS schools were awarded 18-month grants of up to \$25,000 in the second round of Moving Forward in Mission grants as part of the Association's Organizational and Educational Models (OEM) project—an initiative generously funded by Lilly Endowment Inc. Preference was given to proposals that are central to a school's mission, can help a school execute its strategic plan, and will contribute to the sustainability of the institution.

To follow is the list of recipients and their project titles:



- Abilene Christian University  
Graduate School of Theology  
o *Partnership in Mission Initiative*
- Atlantic School of Theology  
o *Enrolment Sustainability Plan*
- Beeson Divinity School of Samford University  
o *Going Global*
- Bethel Seminary of Bethel University  
o *Enhancing Formation through Faculty Mentorship*
- Central Baptist Theological Seminary  
o *Discernment of Three Program Opportunities*
- Christ School of Theology  
of the Institute of Lutheran Theology  
o *Academic Coaching for Online Theological Formation*
- Colgate Rochester Crozer Divinity School  
o *Ministry in Context*
- Columbia Biblical Seminary  
of Columbia International University  
o *The Engage Initiative—Competency-Based Learning*
- Covenant Theological Seminary  
o *Pastor-Minded Church Planters*
- Dallas Theological Seminary  
o *Pedagogical Partnerships*
- Gateway Seminary  
o *Shaping Spanish-Speaking Ministry Leaders*
- Holy Apostles College and Seminary  
o *2025 Strategic Planning Process*

- Lutheran School of Theology at Chicago
  - o *Investing in the Learner Experience: Faculty Development Workshops to Improve Teaching*
- Notre Dame Seminary
  - o *Building Leadership and Administrative Capacity*
- Perkins School of Theology  
Southern Methodist University
  - o *Spanish Language Initiative*
- Phillips Theological Seminary
  - o *Imagining Curriculum in a New Way for a New Day*
- Portland Seminary of George Fox University
  - o *Cultivating Strategic Partners for Market-Driven Programs*
- Regent University School of Divinity
  - o *Enhancing Our Ability to Serve the Church*
- Saint Sophia Ukrainian Orthodox Theological Seminary
  - o *Strategic Action Program Development*
- Southern California Seminary  
Graduate School of Bible and Theology
  - o *SCS Advance 2030!* (future name of the seminary's 2026–2030 Strategic Plan)
- University of Northwestern—  
St. Paul School of Theology and Ministry
  - o *Accelerate Seminary Impact*
- Washington University of Virginia—  
Neal T. Jones Seminary
  - o *Tailored Theological Resources for Underrepresented Communities*

The adjudication team was made up of four representatives from ATS schools that received Moving Forward in Mission grants in the first round. ATS staff members Jo Ann Deasy, Chris Meinzer, and Deborah H. C. Gins—serving as directors for the OEM initiative—were also present in an advisory capacity.

“We are grateful for the good work of the committee,” said Deasy, director of institutional initiatives at ATS.

The grants, created to support schools as they take next steps to fulfill their missions and execute their strategic plans, were designed for schools that did not receive a Phase 2 or Phase 3 *Pathways for Tomorrow* grant or a first round Moving Forward in Mission grant. Grantees have already attended virtual gatherings that provided an overview of the purposes and requirements for the initiative as well as an opportunity to share about their projects with one another. All recipients will plan to submit a report highlighting grant activities, what was learned through the project, how the grant furthered their schools’ strategic plans, and plans for next steps.

Given the rapid pace of change in theological education during the last several years, ATS is also using these grants as an opportunity to better understand how strategic planning is taking place at member schools. What is learned from these grants will help inform future programming designed to strengthen the capacity of theological schools to enter into thoughtful planning grounded in ongoing evaluation (ATS Standard 2: Planning and Evaluation).



Lisa Kern is Manager of Member Engagement at The Association of Theological Schools in Pittsburgh, Pennsylvania.